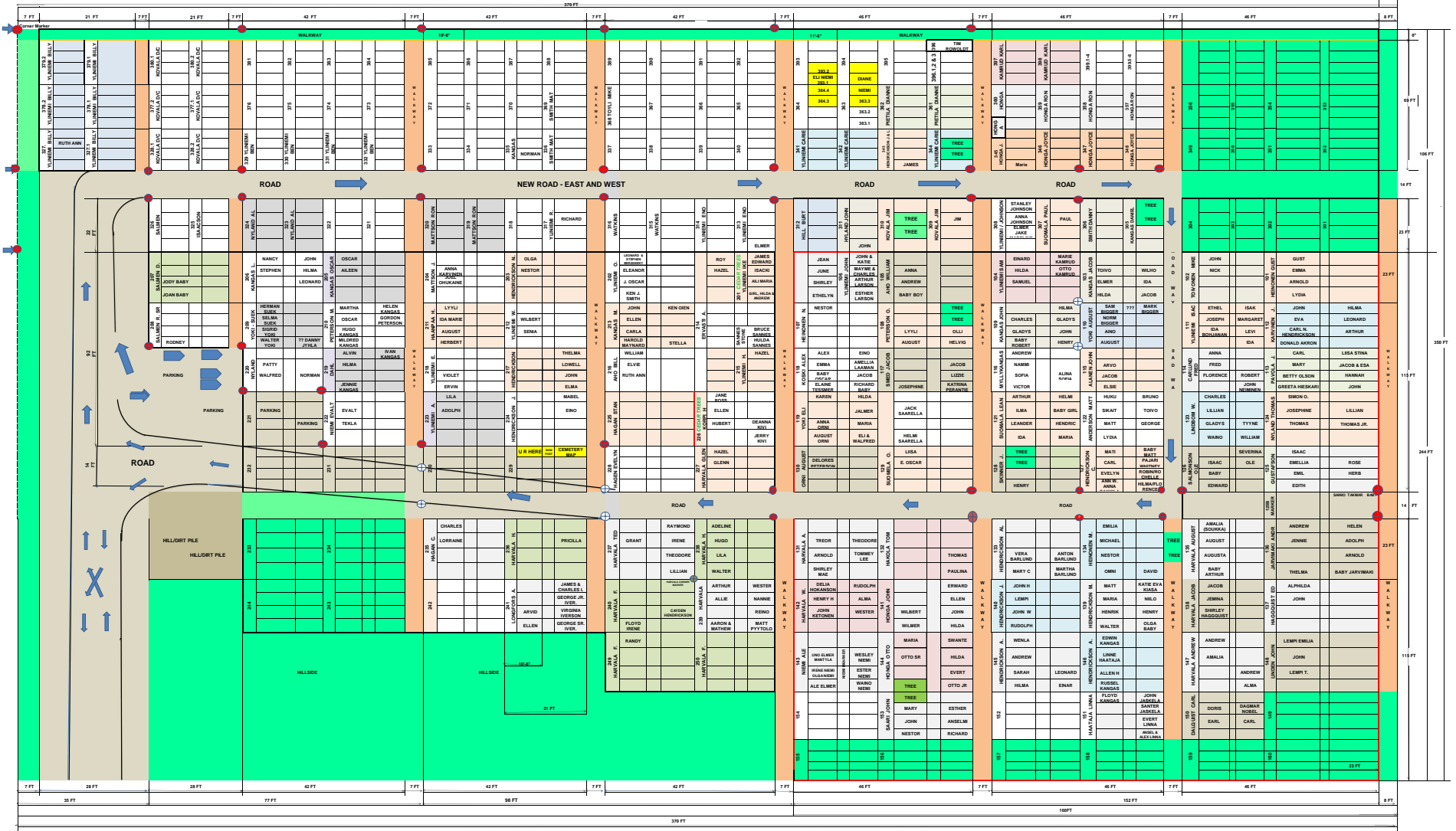


PICKEREL LAKE COMMUNITY CEMETERY



- NOTES:
- 1) LOTS 100 ARE ORIGINAL CEMETERY YEAR 1900 (APPROX. 421 SINGLE PLOTS)
 - 2) LOTS 200 ARE SECOND ADDITION YEAR 1955 (APPROX. 206 SINGLE PLOTS)
 - 3) LOTS 300 ARE THIRD ADDITION YEAR 1995 (APPROX. 170 SINGLE PLOTS)
 - 4) CEMETERY ROAD IS 14 FT WIDE AND WALKWAYS ARE 7 FT WIDE
 - 5) LOTS IN SECTION 100 ARE 27' X 27' (SOME LOTS)
 - 6) LOTS IN SECTION 200 ARE 27' D.W. X 27' N.S. (BRIGHT LOTS)
 - 7) LOTS IN SECTION 300 ARE 10' 6" D.W. X 22' N.S. (POOR LOTS)

- ISSUES:
- 1) 12/1/2011 DAN KANGAS
 - 2) 10/1/2012
 - 3) 11/1/2012
 - 4) 12/1/2012
 - 5) 1/1/2013
 - 6) 2/1/2013
 - 7) 3/1/2013
 - 8) 4/1/2013
 - 9) 5/1/2013
 - 10) 6/1/2013
 - 11) 7/1/2013
 - 12) 8/1/2013
 - 13) 9/1/2013
 - 14) 10/1/2013
 - 15) 11/1/2013
 - 16) 12/1/2013

PICKEREL LAKE COMMUNITY CEMETERY
 WOLF LAKE PARCEL # 377073000 SECTION 13
 352 FT X 350 FT (1.14 ACRES)

- 17) UPDATED AND ADDED LOCATION OF STEEL POST MARKERS

